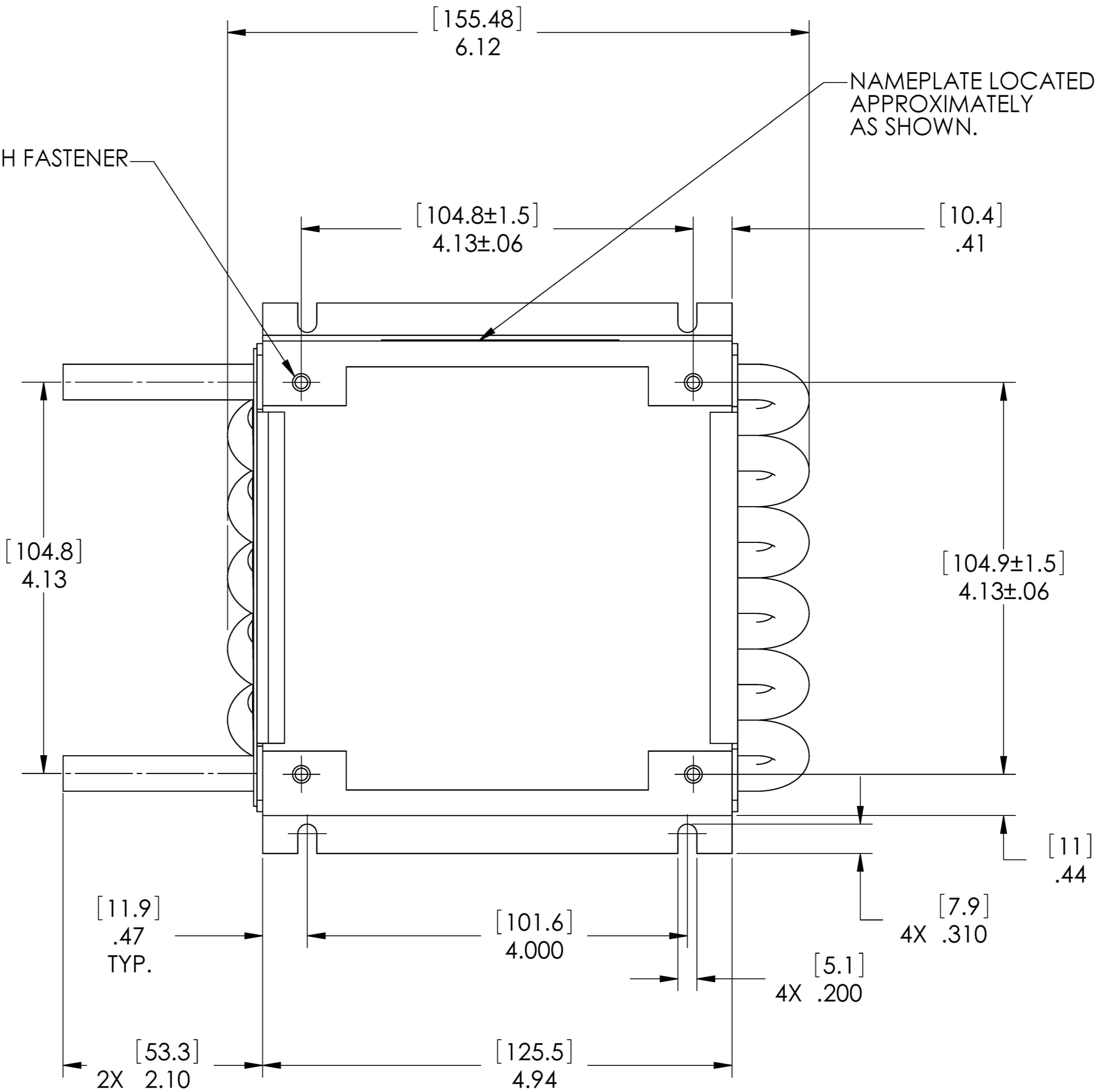
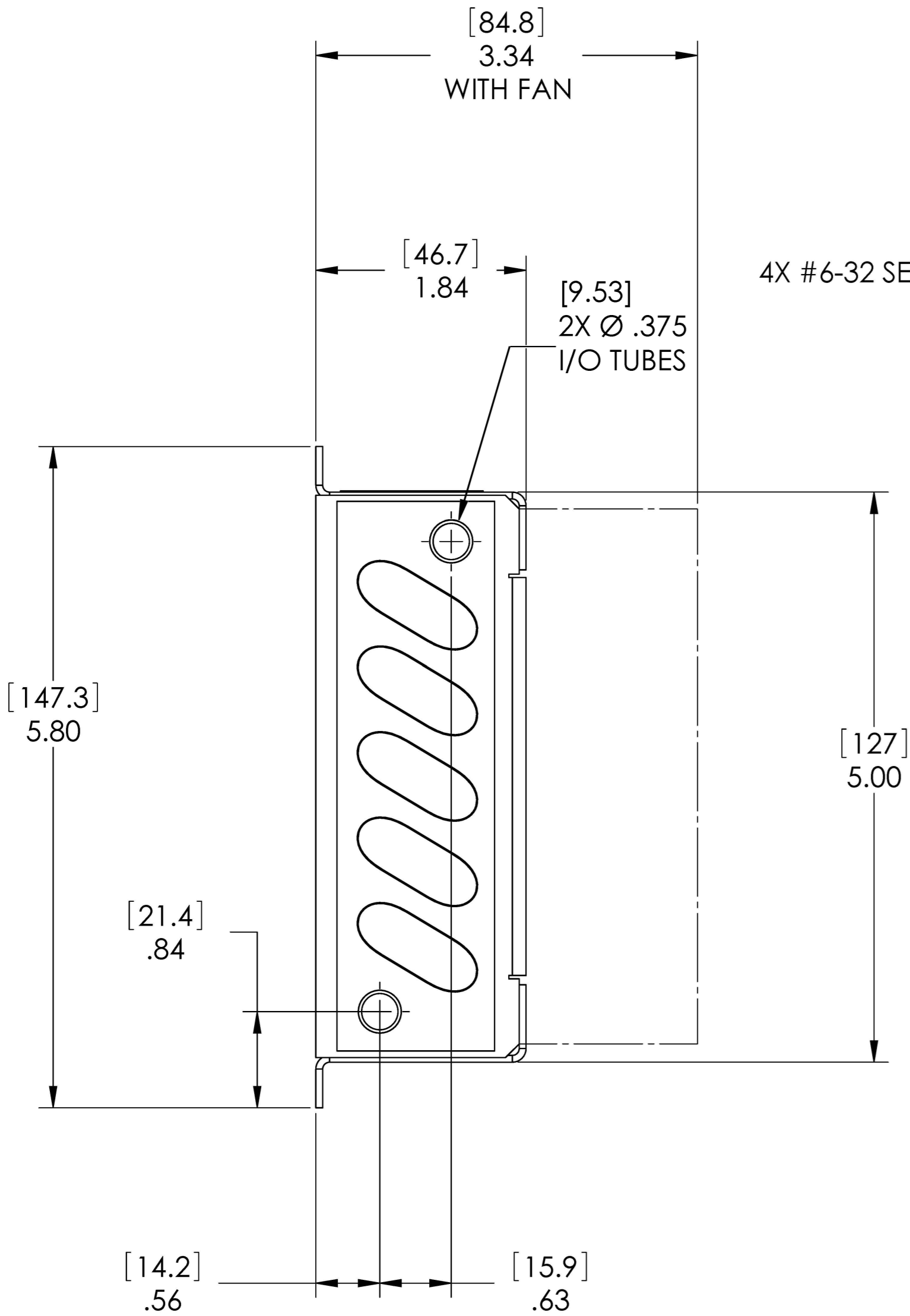



THIS DOCUMENT IS THE PROPERTY OF LYTRON, INC. AND REPRESENTS A PROPRIETARY ARTICLE ON WHICH LYTRON, INC. RETAINS ANY AND ALL PATENT AND OTHER RIGHTS, INCLUDING EXCLUSIVE RIGHTS OF USE AND/OR MANUFACTURE AND/OR SALE. POSSESSION OF THIS DOCUMENT DOES NOT CONVEY ANY PERMISSION TO REPRODUCE THE DOCUMENT OR MANUFACTURE THE ARTICLE OR ARTICLES SHOWN THEREIN.



MATERIAL	
TUBING CIRCUIT & FRAMING	STAINLESS STEEL
OUTER FIN	COPPER
FITTINGS	STAINLESS STEEL

4110G10SB

- NOTES:
1. DIMENSIONS IN [ ] ARE IN MILLIMETERS.
  2. LEAK TEST- PNEUMATIC PRESSURE TEST AT 150 PSIG.

UNLESS OTHERWISE SPECIFIED		REDRAWN	DATE		<div><div><b>LYTRON</b><sup>™</sup></div><div>Total Thermal Solutions</div></div> <div>Lytron Inc. 55 Dragon Ct. Woburn Ma. 01801</div>		
ANGULAR DIMENSIONS ARE ± 1° SURFACE ROUGHNESS 125 (3.2µ) BREAK EDGES .010 MAX. REMOVE ALL BURRS		DRAWN					
TOLERANCE ON DECIMALS		APPV'D					
.X .XX .XXX INCH ±.X ±.10 ±.010 (mm) ±.25 ±.XX ±.XXX		APPV'D			DRAWING TITLE  HEAT EXCHANGER ASSY  CORE CODE: L6-2-16-4.94		
THIRD ANGLE PROJECTION 		DO NOT SCALE THIS DRAWING					
DIMENSIONS AND TOLERANCING ARE PER ANSI STD Y14.5		MAT'L SEE TABLE					
FINISH		-----		SIZE D	FSCM NO. 11245	DRAWING NO. S-4110G10SB	REV P
				SCALE 1/1	WT.		SHEET 1 OF 2