

# Adapter FC Square Solid

## Technical Specification



**GENERAL**

This specification covers the requirement of the adapter FC Square Solid for SM and MM applications.

**APPLICATIONS**

- Telecommunications
- Local area network
- Fibre optic instruments
- Testing of optical devices

**FEATURES**

- Compliant with NTT specifications
- Low insertion loss
- High durability
- Precision alignment straight split sleeves

**OPTICAL CHARACTERISTICS**

**Typical Insertion Loss [dB] at 1310 nm**

Adapter Type	SM		MM
	Zirconia split sleeve	Phosphor Bronze Sleeve High Quality	Phosphor Bronze Sleeve Standard
FC Square Solid PC	0.10	0.15	0.25
FC Square Solid APC	0.10	0.15	-

**MECHANICAL CHARACTERISTICS**

- Insertion Loss variation after 500 connections: < 0.10 dB
- Corrosion resistant body

**MATERIALS**

Parts	Material	Colour
Body	Nickel plated brass	Metal
Dust cap	Vinyl	Black/Light green
Sleeve	Zirconia or Phosphor Bronze	-

**ENVIRONMENTAL SPECIFICATIONS**

	min	max
Operating Temperature [°C ]	- 40	+ 85
Storage Temperature [°C ]	- 40	+ 95

**RECOMMENDED PANEL HOLE**

The following drawing shows the dimensions recommended for the panel hole:

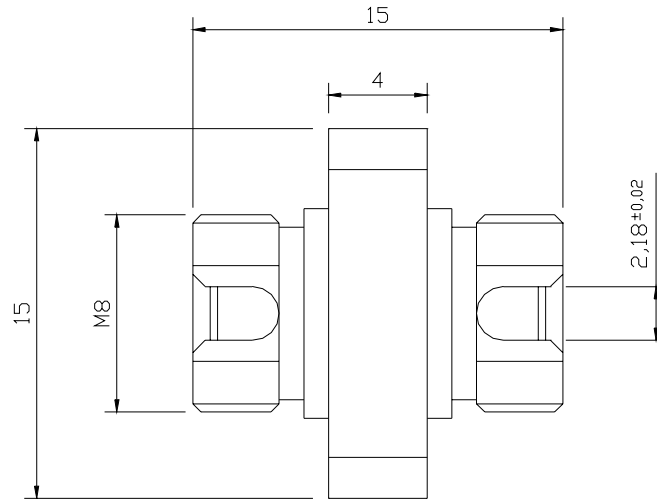
Model	Flange	Recommended Panel Hole
FC Square Solid		

**KEY WIDTH**

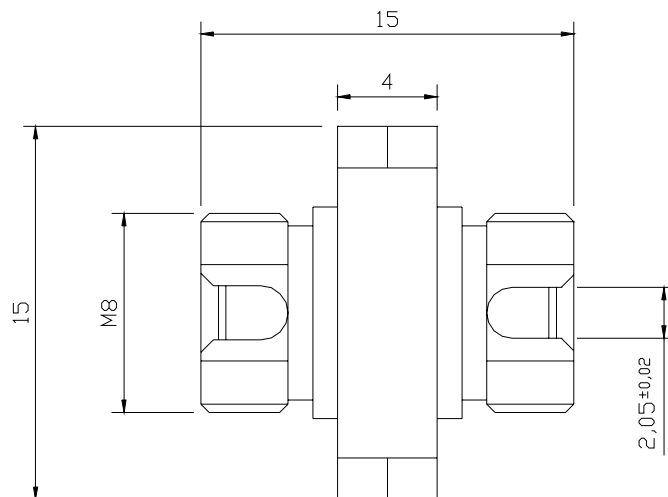
Model	PC	APC
FC Square Solid		

TECHNICAL DRAWING

Adapter FC Square Solid PC



Adapter FC Square Solid APC



END OF SPECIFICATION