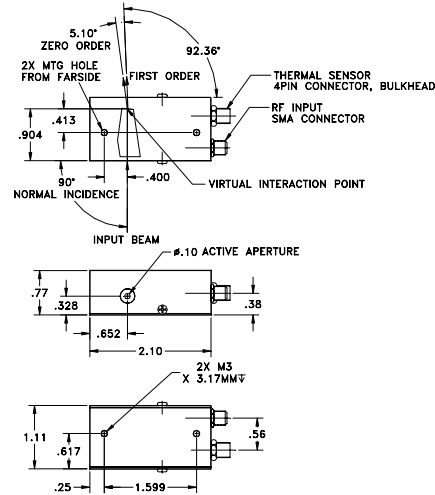


**SPECIFICATIONS**

AO Medium	TeO2
Acoustic Velocity	.68 mm/μs
Active Aperture*	2.5 mm Dia
RF Frequency Range	80-152 MHz
RF Bandpass (FWHM)	280 KHz @ 476 nm
Wavelength Range	430-670 nm
VSWR	2.4 :1 Max
Input Impedance	50 Ohms Nominal
Insertion Loss	3 % Max
Temperature Sensitivity	0.05 nm/C
Diffacted Beam Collinearity, min deviation	.01 degrees
Input Optical Polarization	Vertical
Output Optical Polarization	Horizontal
Max RF Power	1 W

**Outline Drawing:**

**Package 97-02838-01-15rC**



**Document**  
**06/22/11**  
**Control**



info@amstechnologies.com  
 www.amstechnologies-webshop.com



**Notes:**

Simultaneous Diffraction, any 8 wavelengths  
 Random Wavelength Access Time: < 1.5 usec (1 mm Beam Diameter)  
 Max RF Power with 8 Simultaneous Frequencies = 1W

**Special Testing**

Diffraction Efficiency  
 (per wavelength input divergence < 2 mrad)

<b>Min</b>	<b>Units</b>	<b>Max</b>
90	%	

THIS DOCUMENT IS THE PROPERTY OF CRYSTAL TECHNOLOGY, LLC. IT IS NOT TO BE REPRODUCED OR DISCLOSED IN WHOLE OR IN PART OTHER THAN BY EMPLOYEES CRYSTAL TECHNOLOGY AND ITS CONTRACTED REPRESENTATIVES AND DISTRIBUTORS. ANY EXCEPTION REQUIRES THE WRITTEN CONSENT OF AN AUTHORIZED REPRESENTATIVE OF CRYSTAL TECHNOLOGY.

TOLERANCES: .XX ± .01 .XXX ± .005	DR	Geri Scholz 6/22/2011	
MATERIAL:	CHK		
FINISH: 	APP		DESCRIPTION: <b>AOTF PCAOM</b> 80-152 MHz Vert. Pol.
	APP		PART NUMBER: 97-02838-01
		REV: G	SHEET 1 OF 1

\*Active Aperture: Aperture over which performance specifications apply.