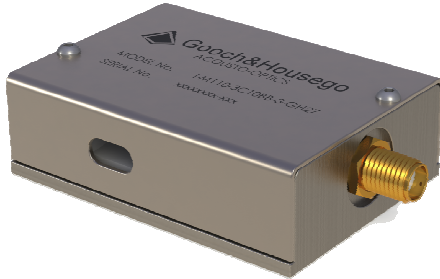


Gooch & Housego



400 – 540nm Acousto-Optic Modulator

I-M110-2C10B6-3-GH26

An acousto-optic modulator for use in the 400 – 540nm wavelength range, ideal for frequency doubled Nd:YAG and Nd:YVO₄ lasers and diode or gas lasers within this range.

Manufactured in Crystal Quartz for improved thermal management and efficiency. This modulator combines high quality optical finishing with high grade anti-reflection coatings to maintain superior beam quality and high optical throughput.

In addition to the specifications indicated, we also offer alternative wavelengths, RF frequencies, active apertures & a wide range of custom housing configurations. We also offer full custom design & manufacturing, enabling our customers to achieve the perfect solution.

Our scientists and engineers are available to assist in selecting the most appropriate Acousto-Optic device and RF driver for your application.

Please contact our sales team for further information.

Key Features:

- ☐ Crystal Quartz
- ☐ 400 – 540nm
- ☐ High damage threshold
- ☐ 110MHz

Applications:

- ☐ Industrial (material processing):
 - Pulse Picking
 - Laser intensity control



amSTECHNOLOGIES
where technologies meet solutions

info@amstechnologies.com
www.amstechnologies-webshop.com

Contact us 

Contact: sales@goochandhousego.com

www.goochandhousego.com

As part of our policy of continuous product improvement we reserve the right to change specifications at any time
IWDS025 V1.0

General Specifications

| | |
|-----------------------------|----------------------------------|
| Interaction material: | Crystal Quartz |
| Wavelength: | 400 - 540nm |
| Optical polarisation: | Linear, vertical to base |
| AR coating reflectivity: | < 0.5% per surface |
| Damage threshold: | > 500MW/cm ² (pulsed) |
| Transmission (single pass): | > 99.0% |
| RF frequency: | 110MHz |
| VSWR: | < 1.2:1 |
| Active aperture: | 2.0mm |
| Acoustic mode: | Compressional |
| Rise-time: | 113ns/mm |
| Separation angle: | 10.2mrad at 532nm |
| Diffraction Efficiency: | > 85% |
| RF power: | < 5W |

Ordering Code

Explanation: I-M110-2C10B6-3-GH26 (Modulator, 110MHz, 2.0mm active aperture, compressional mode, Crystal Quartz, 400 - 540nm, SMA male bulkhead, GH26 housing).

| | | | | | | | | | | | | | | | | | | | |
|---|---|---|---|---|---|---|---|---|---|---|---|---|---|---|---|---|---|---|---|
| I | - | M | 1 | 1 | 0 | - | 2 | C | 1 | 0 | B | 6 | - | 3 | - | G | H | 2 | 6 |
|---|---|---|---|---|---|---|---|---|---|---|---|---|---|---|---|---|---|---|---|

