

SPECIFICATIONS

AO Medium	TeO ₂
Acoustic Velocity	.68 mm/μs
Active Aperture*	2.5 mm Dia
RF Frequency Range	55-100 MHz
RF Bandpass (FWHM)	890 KHz @ 405 nm
Wavelength Range	400-650 nm
VSWR	2.8 :1 Max
Input Impedance	50 Ohms Nominal
Insertion Loss	5 % Max
Temperature Sensitivity	0.05 nm/C
Diffacted Beam Collinearity, min deviation	0.01 degrees
Input Optical Polarization	Vertical
Output Optical Polarization	Horizontal
Max RF Power	2 watt

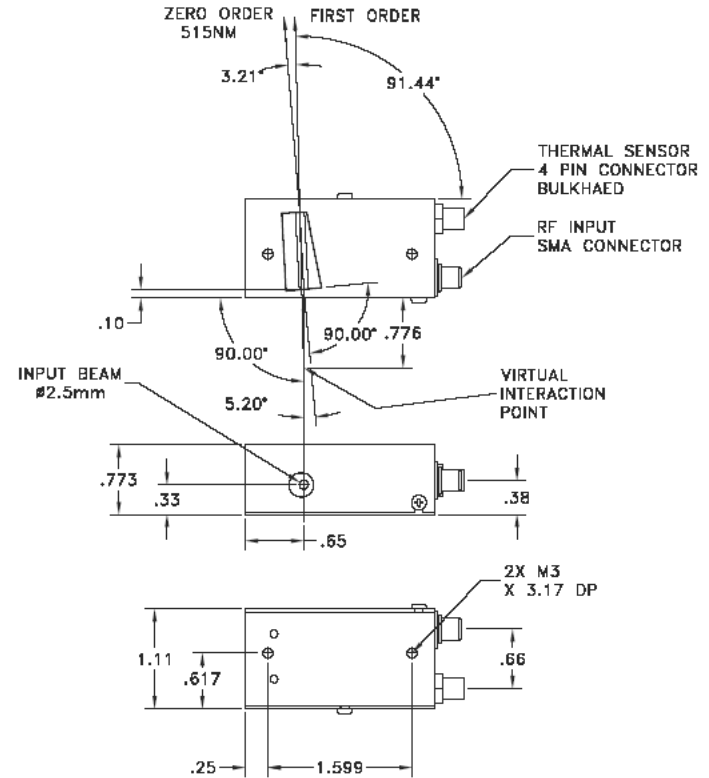
Document
04/25/12
Control

Special Testing

Diffraction Efficiency
(per wavelength input divergence < 2 mrad)

Min	Units	Max
90	%	

Outline Drawing: Package 97-03151-01-15rB



Notes:
Simultaneous Diffraction, any 8 wavelengths
Max RF Power with 8 Simultaneous Frequencies = 2W
VSWR 2.8:1 = 6.5 dB Return Loss.

THIS DOCUMENT IS THE PROPERTY OF CRYSTAL TECHNOLOGY, LLC. IT IS NOT TO BE REPRODUCED OR DISCLOSED IN WHOLE OR IN PART OTHER THAN BY EMPLOYEES CRYSTAL TECHNOLOGY AND ITS CONTRACTED REPRESENTATIVES AND DISTRIBUTERS. ANY EXCEPTION REQUIRES THE WRITTEN CONSENT OF AN AUTHORIZED REPRESENTATIVE OF CRYSTAL TECHNOLOGY.

TOLERANCES: .XX ± .01 .XXX ± .005	DR	G. Scholz 4/5/2012	Crystal Technology, LLC	
MATERIAL:	CHK		DESCRIPTION: AOTF PCAOM VIS 400-650	
FINISH: 	APP		PART NUMBER: 97-03151-01	REV: A
	APP			SHEET 1 OF 1

info@amstechnologies.com
www.amstechnologies-webshop.com

Contact us