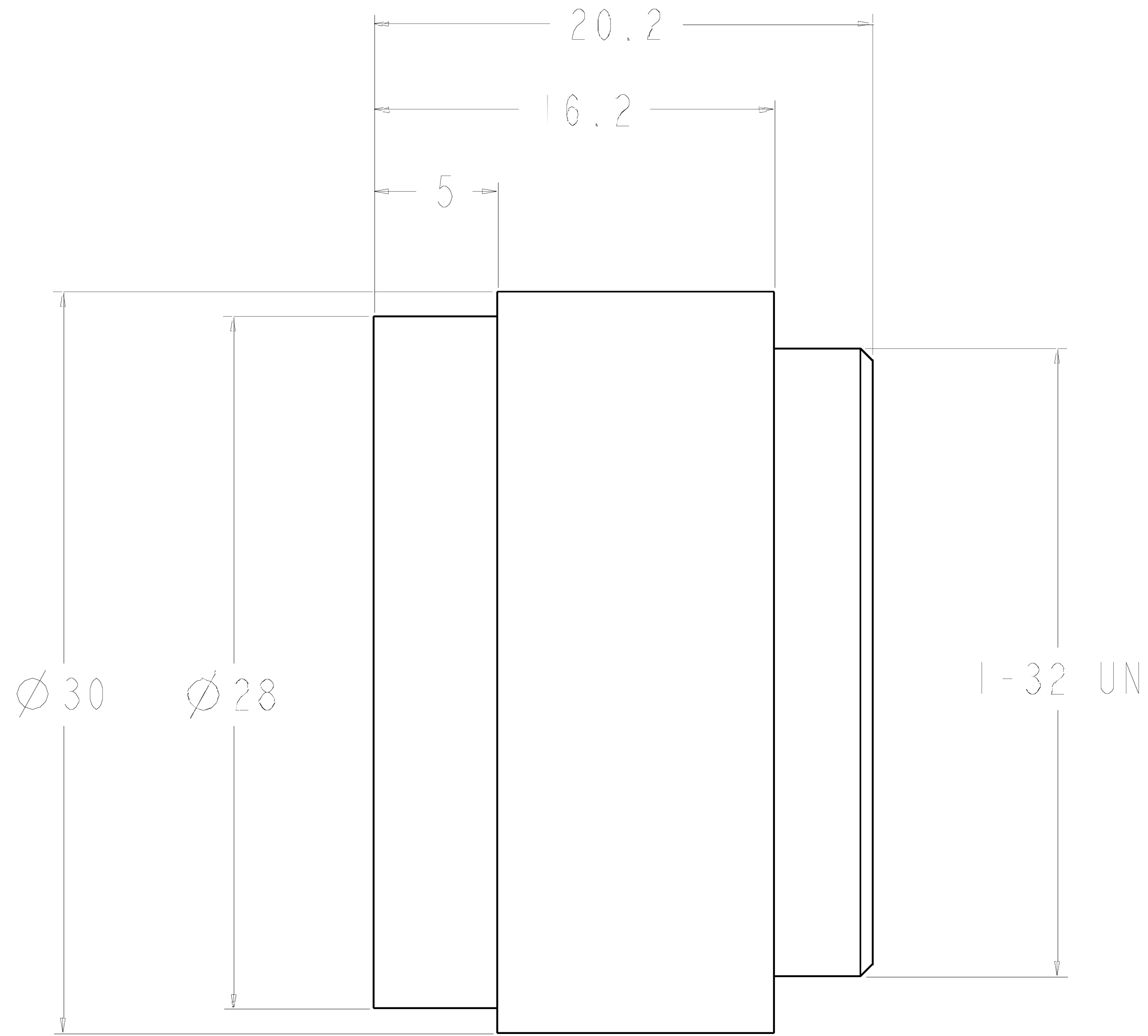


|     |    |      |     |
|-----|----|------|-----|
| LTP | CO | DATE | CHK |
|     |    |      |     |



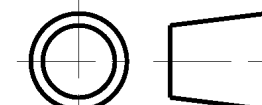
Distributor



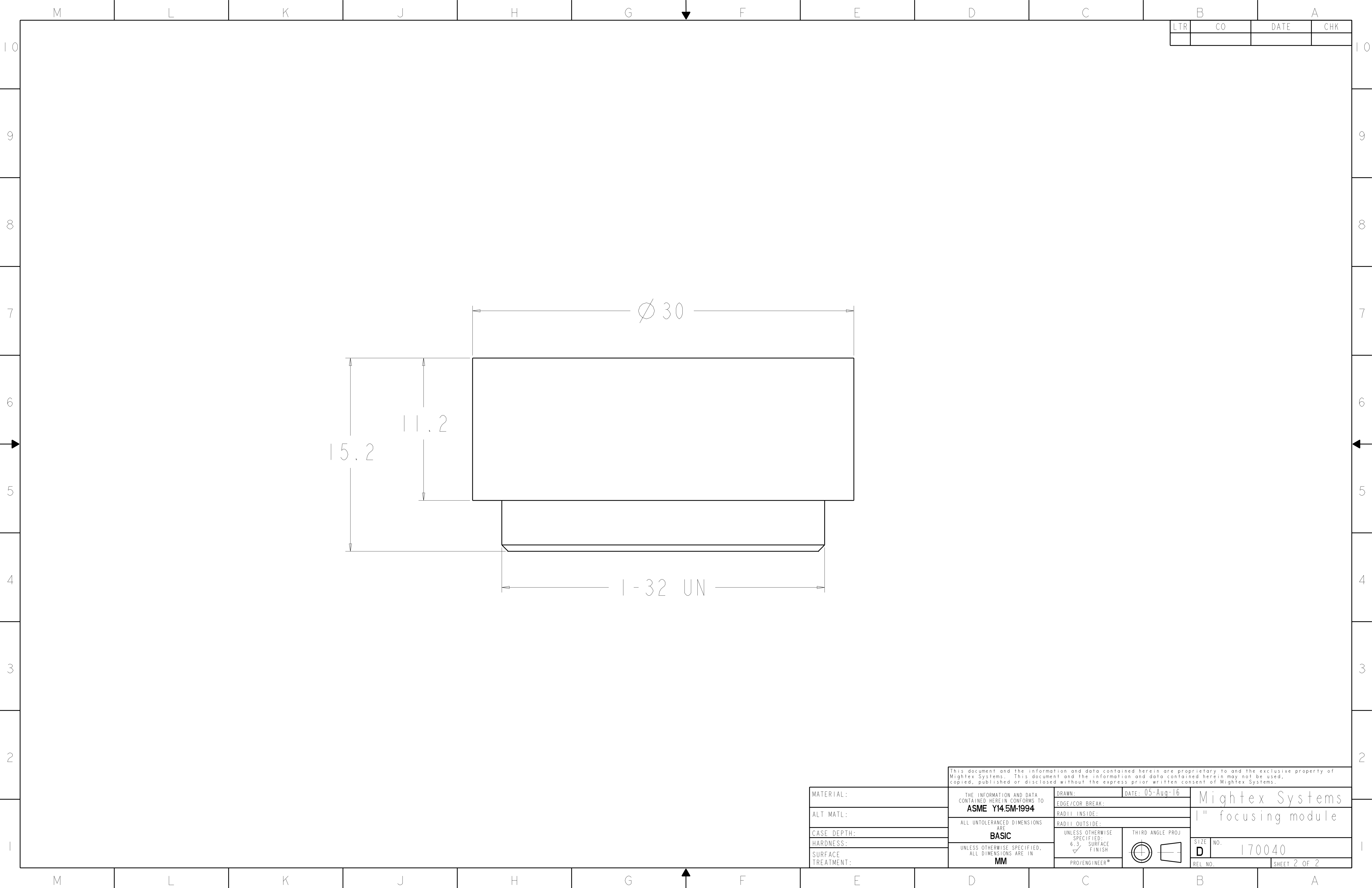
amstechnologies  
where technologies meet solutions

info@amstechnologies.com  
www.amstechnologies-webshop.com

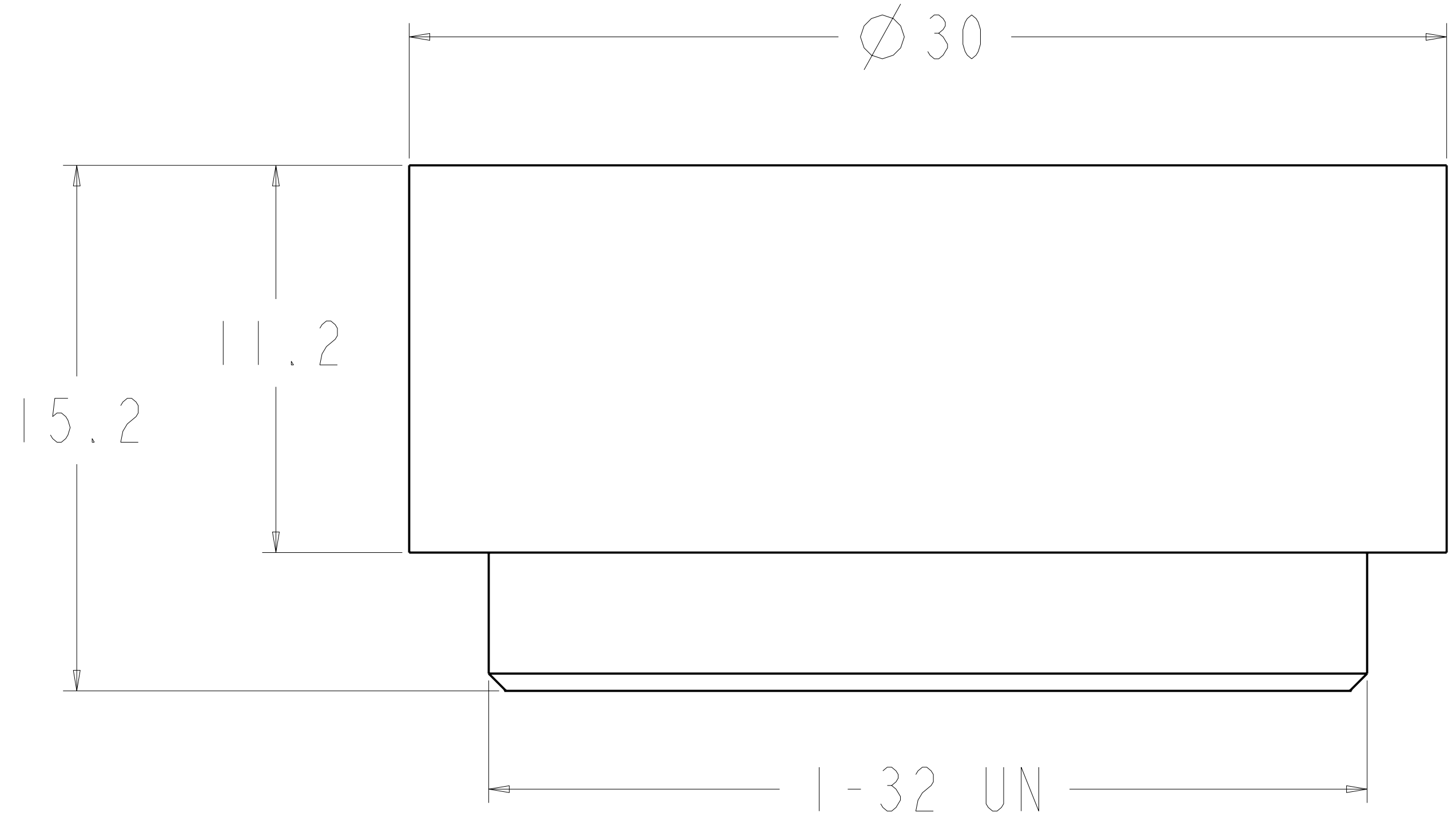
Contact us 

|                    |  |   |   |                          |
|--------------------|--|---|---|--------------------------|
| MATERIAL:          | THE INFORMATION AND DATA CONTAINED HEREIN CONFORMS TO<br><b>ASME Y14.5M-1994</b> | DRAWN:  | DATE: 05-Aug-16   | Mightex Systems          |
| ALT. MATL:         |  | EDGE/COR. BREAK:                                  |   |                          |
| CASE DEPTH:        | ALL UNTOLERANCED DIMENSIONS ARE  | RADII INSIDE:                                     |   |                          |
| HARDNESS:          | <b>BASIC</b>   | RADII OUTSIDE:                                    |   |                          |
| SURFACE TREATMENT: | UNLESS OTHERWISE SPECIFIED, ALL DIMENSIONS ARE IN<br><b>MM</b>                   | UNLESS OTHERWISE SPECIFIED:<br>6.3 SURFACE FINISH | THIRD ANGLE PROJ<br> | SIZE NO.<br><b>D CID</b> |
|                    |  | PRO/ENGINEER®                                     |   | REL. NO. SHEET 1 OF 1    |

This document and the information and data contained herein are proprietary to and the exclusive property of Mightex Systems. This document and the information and data contained herein may not be used, copied, published or disclosed without the express prior written consent of Mightex Systems.



|     |    |      |     |
|-----|----|------|-----|
| LTR | CO | DATE | CHK |
|     |    |      |     |



|  |  |                  |                 |
|--|--|------------------|-----------------|
| <small>This document and the information and data contained herein are proprietary to and the exclusive property of Mightex Systems. This document and the information and data contained herein may not be used, copied, published or disclosed without the express prior written consent of Mightex Systems.</small> |  |                  |                 |
| MATERIAL:  | THE INFORMATION AND DATA CONTAINED HEREIN CONFORMS TO<br><b>ASME Y14.5M-1994</b> | DRAWN:           | DATE: 05-AUG-16 |
| ALT MATL:  |  | EDGE/COR BREAK:  |                 |
| CASE DEPTH:  | ALL UNTOLERANCED DIMENSIONS ARE<br><b>BASIC</b>                                  | RADIi INSIDE:    |                 |
| HARDNESS:  | UNLESS OTHERWISE SPECIFIED:<br>6.3 SURFACE FINISH                                | RADIi OUTSIDE:   |                 |
| SURFACE TREATMENT:   | UNLESS OTHERWISE SPECIFIED, ALL DIMENSIONS ARE IN<br><b>MM</b>                   | THIRD ANGLE PROJ |                 |
|  |  | PRO/ENGINEER*    |                 |
|  |  | SIZE             | NO.             |
|  |  | <b>D</b>         | 170040          |
|  |  | REL NO.          | SHEET 2 OF 2    |

Mightex Systems  
1" focusing module

SIZE D NO. 170040  
REL NO. SHEET 2 OF 2