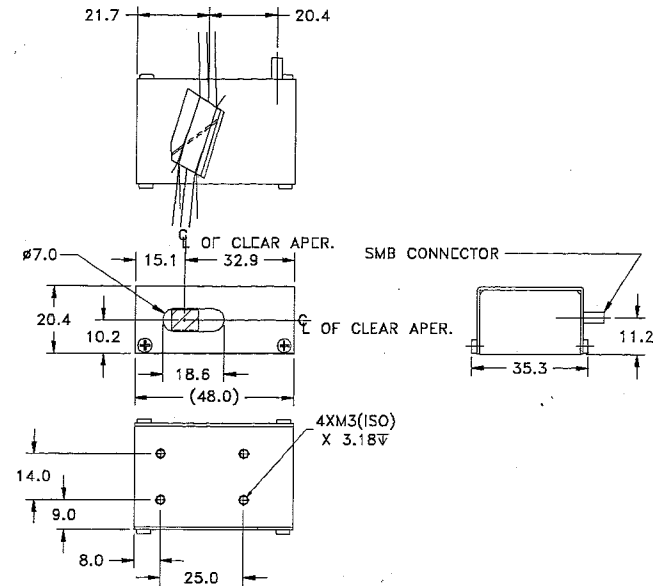


SPECIFICATIONS

AO Medium	. TeO2
Acoustic Mode	Shear, Off Axis
Acoustic Velocity	0.710 mm/μs
Wavelength	442 nm
Input Polarization	0° to Mounting Plane
Output Polarization	90° to Mounting Plane
Insertion Loss	5%
Center Frequency (Fc)	200 MHz
RF Bandwidth	100 MHz
RF Power	1.0 Watt
Active Aperture	4.8 mm
Average Diffraction Efficiency	>75%
Flatness Across Bandwidth	±10%
Min Diffraction Efficiency	>70%
Peak Valley at 633 nm (No RF Power)	< 0.100
RMS at 633 nm	N/A
VSWR	< 2.0:1
Scan Angle	63.1 mrad @ 442 nm
Time Bandwidth	N/A

OUTLINE DRAWING



DOCUMENT CONTROL

MAR 27 2006

Notes:

1. Input impedance is 50 Ohms.
2. Anti-Reflection Coating is less than 1.0% both side.
3. Time Aperture is 6.5 us.

amstechnologies
where technologies meet solutions

info@amstechnologies.com
www.amstechnologies-webshop.com

Contact us

THIS DOCUMENT IS THE PROPERTY OF CRYSTAL TECHNOLOGY, INC. IT IS NOT TO BE REPRODUCED OR DISCLOSED IN WHOLE OR IN PART OTHER THAN BY EMPLOYEES OF CRYSTAL TECHNOLOGY AND ITS CONTRACTED REPRESENTATIVES AND DISTRIBUTERS. ANY EXCEPTION REQUIRES THE WRITTEN CONSENT OF AN AUTHORIZED REPRESENTATIVE OF CRYSTAL TECHNOLOGY.

TOLERANCES: .XX ±.25 ± .XXX .125	DR	A. Campi 3/7/2006	Crystal Technology, Inc.		
MATERIAL:	CHK	R.D. 3/7/06	DESCRIPTION: AODF 4200-1		
FINISH:	APP		PART NUMBER:	REV:	SHEET 1 OF 1
	APP		97-01610-01	B	